

CERTEX

Lifting Products and Services



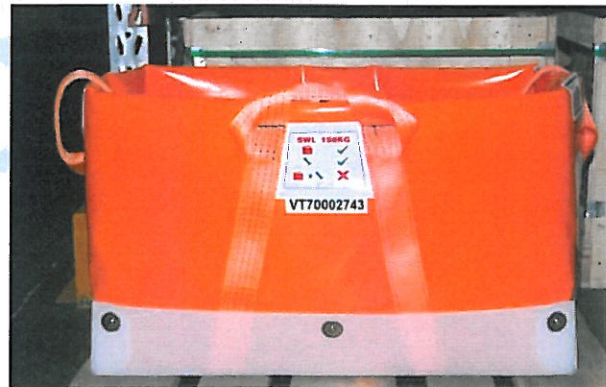
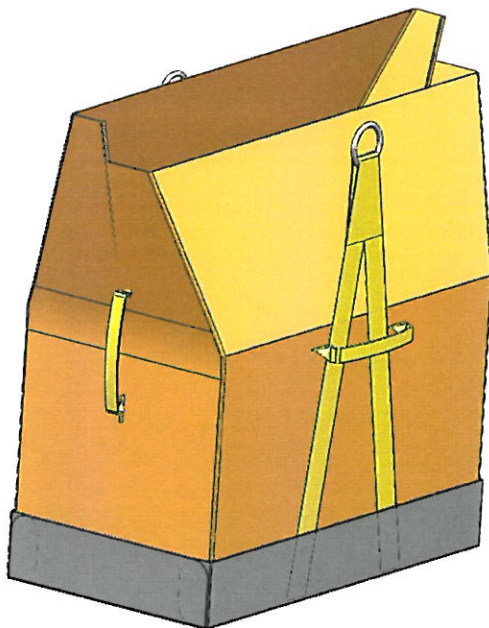
C E R T E X F O R C E R T A I N T Y

Technical dossier No. 9048 / 0700-R1

Subject:

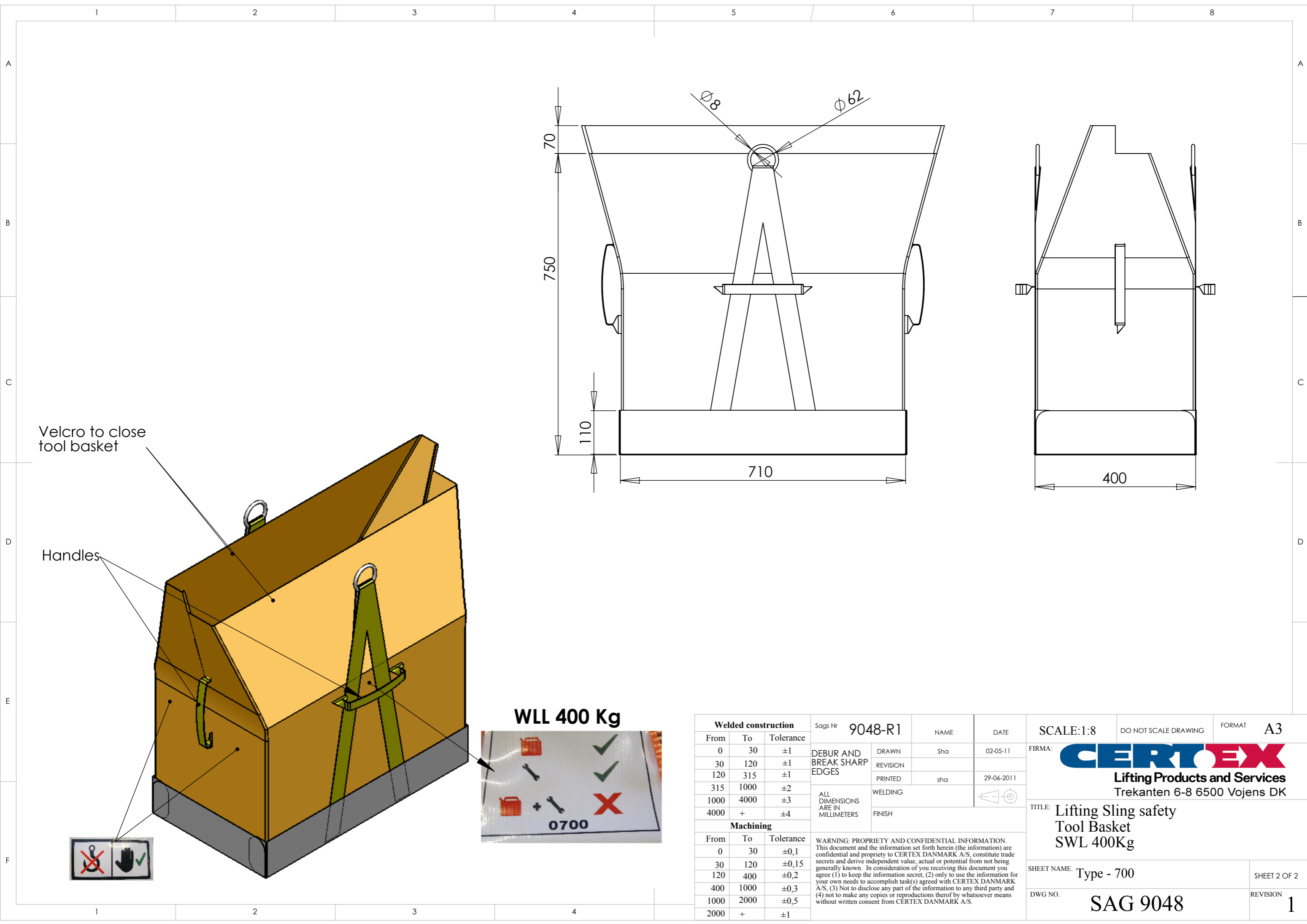
Lifting sling with Tool Basket.

SWL 400 Kg,



Hans Aa & Sønner
Vagervej 5
6700 Esbjerg

 AXEL JOHNSON INTERNATIONAL



Velcro to close tool basket

Handles

WLL 400 Kg



Welded construction		
From	To	Tolerance
0	30	±1
30	120	±1
120	315	±1
315	1000	±2
1000	4000	±3
4000	+	±4
Machining		
From	To	Tolerance
0	30	±0,1
30	120	±0,15
120	400	±0,2
400	1000	±0,3
1000	2000	±0,5
2000	+	±1

Sags Nr 9048-R1

NAME DATE

SHA 02-05-11

REVISION

PRINTED sha 29-06-2011

WELDING

FINISH

ALL DIMENSIONS ARE IN MILLIMETERS

WARNING: PROPRIETY AND CONFIDENTIAL INFORMATION. This document and the information set forth herein (the information) are confidential and propriety to CERTEX DANMARK A/S, constitute trade secrets and derive independent value, actual or potential from not being generally known. In consideration of you receiving this document you agree (1) to keep the information secret, (2) only to use the information for your own needs to accomplish task(s) agreed with CERTEX DANMARK A/S, (3) Not to disclose any part of the information to any third party and (4) not to make any copies or reproductions thereof by whatsoever means without written consent from CERTEX DANMARK A/S.

SCALE:1:8 DO NOT SCALE DRAWING FORMAT A3

FIRMA: **CERTEX**

Lifting Products and Services
Trekanten 6-8 6500 Vojens DK

TITLE: Lifting Sling safety
Tool Basket
SWL 400Kg

SHEET NAME: Type - 700 SHEET 2 OF 2

DWG NO. SAG 9048 REVISION 1

Hans Aa & Sønner APs
Vagervej 5
6700 Esbjerg

Inspection certificate

Type 3.1 – after EN 10204

(Forklaring: Indeholder resultatet af alle specificerede prøvninger udtaget fra selve det parti, der er leveret – specifik prøvning. Prøvningsomfang er udført efter bestillingsnorm og ordre.)

CERTIFICATE No.: 20110617

Date: 28-06-2011

Customer -No.: 75123288

- All indicated values are in conformance with the results from the specific inspection

Order No.:
SR 002877-2

Sales Initials:
FHW

Reference to standard :
Directive 2006/42/EC
EN 1492-1

Expandit no:
SR 002877-2

Initials:
T O

Id. No. dynamometer:

Customers order no.

Customer Initials:
Hans Erik

Information in this certificate is in accordance with the Directive 2006/42/EC.

With supply of machines in accordance with Directive 2006/42/EC, this certificate is proof of accordance to the Directive.

To the supplied product with the following details.

Article No. / Marking	Description	No off	Date	Proof Loaded in kg	Bending with WLL in mm	Approved WLL in Kg
0700	Lifting sling with Tool Basket. SWL 400 Kg 400*750*750mm, with 2 lifting rings	1	28 Jun 11	600 free & 5672 in floor rail		400

CERTEX DANMARK A/S

Quality Manager:


Keld Jacobsen



This certificate is produced automatically by machine in accordance with EN 10204 (section 5) and approved even without signature.

Project No.: **9048**

Date 29-06-2011
Sha 100332
Simple hoisting accessories

Machinery: **Lifting sling with Tool Basket**

Type: **SAG 9048**

Intended use: **Lifting of Tools and Equipment**

WLL: **400 Kg.**

Use frequency: **5 times per Dag** (Day/Week/Month/Year)

Use environment: **-30 to +100 °C In & out** (Inside/Outside)

Dimensions, L: **up to 700 mm.**
W: **up to 420 mm.**
H: **750 mm.**

Risk assessment =

Injury severity, **K**

and

Possibility of injuries, **N =**

Frequency, **f +**

Probability, **s +**

Opportunity, **m**

0	Not current
1	Negligible injuries, days of sickness < 3
2	Reversible injuries, 3 < days of sickness < 30
3	Unreversible injuries, 30 < days of sickness
4	Catastrophic injuries, death

1	Never/almost never
2	Rare, per. year
3	Occasionally, per month.
4	Frequent, per. week
5	Daily, every day

1	Very unlikely
2	Unlikely
3	Conceivable
4	Possible
5	Very possible

1	Very high
2	High
3	Possible
4	Low
5	Not possible

Annex I 2006/42/EC	EN 13155	AT-statement 2.02.10	CERTEX knowledge/exp.	Identification of hazards	Risk assessment	Solution acc. annex no.	Remaining hazards	Injury severity, K	Frequency and duration of the dangerous effects			Probability of the hazardous event occur			Opportunity to avoid or limit the hazard			Poss. of hazards, f+s+m	Possibility, category
									f	s	m	s	m	m	s	m			
1.2 CONTROL SYSTEMS																			
1.3 PROTECTION AGAINST MECHANICAL HAZARDS																			
1.3.1	5.1.1.2	Closeprox. of lift./supp. point		Loss of stability	Prev. Action			2	5	3	2					10	C		
				Stability during operation	Acceptable		2	5	1	1	7	D							
	5.1.5			Stability during storage	Acceptable		1	5	3	1					9	C			
1.3.2	5.1.1.1			Break-up during operation	Prev. Action	3 Calculation		3	5	2	1				8	C			
1.3.3				Falling or ejected objects	Prev. Action	6.2,4 Instructions	Improper operation	4	5	1	1				7	D			
1.3.4				Surfaces, edges or angles	Acceptable			1	5	2	1				8	C			
1.3.5				Combined machinery	N/A			0	5	1	1				7	D			
1.3.6				Variation in operating conditions	N/A			0	5	1	1				7	D			
1.3.7				Moving parts	Acceptable			2	5	1	1				7	D			
1.3.8.2				Moving parts involved in the process	N/A			0	5	1	1				7	D			
	5.1.3			Handles	Acceptable			1	5	2	1				8	C			
	5.2.6.1	"Use"		Attach. the lift.beam to the crane	Acceptable	6.2,3 Instructions	Improper operation	2	5	1	1				7	D			
	5.2.6.2			Securing the load to the lift.beam	Acceptable	6.2,4 Instructions	Improper operation	2	5	1	1				7	D			
1.3.9				Uncontrolled movements	N/A			0	5	1	1				7	D			
1.4 REQUIRED CHARACTERISTICS OF GUARDS AND PROTECTIVE DEVICES																			
1.5 RISKS DUE TO OTHER HAZARDS																			
1.5.2				Static electricity	N/A			0	1	1	3				5	D			
1.5.4				Assembly errors	N/A	6.2,3,4 Instructions	Incorrect assembly	0	5	1	1				7	D			
1.5.5				Extreme temperatures	N/A			0	1	1	1				3	E			
1.5.15		Other safety factors		Risk of slipping, tripping or falling	Prev. Action			2	5	3	2				10	C			
1.5.16				Lightning	N/A	6.4 Instructions	Misinterpretation	0	1	1	5				7	D			
1.6 MAINTENANCE																			
1.6.1	"Maintenance"			Machinery maintenance	Acceptable	6.5 Instructions	Improper operation	1	5	3	1				9	C			
1.6.4				Operator intervention	Prev. Action			2	5	3	2				10	C			
1.6.5				Cleaning of internal parts	Acceptable			1	5	3	2				10	C			
1.7 INFORMATION																			
1.7.1				Information and warnings on the machinery	Acceptable	WLL streamer	Misinterpretation	1	5	2	2				9	C			
1.7.1.1				Information and information devices	Acceptable	6 Instructions	Misinterpretation	1	5	2	2				9	C			
1.7.2				Warning of residual risks	Acceptable	6.2,3 Instructions	Misinterpretation	1	5	3	2				10	C			
1.7.3				Marking of machinery	Prev. Action	WLL streamer	Misinterpretation	2	5	3	2				10	C			
1.7.4				Instructions	Prev. Action	6 Instructions	Misinterpretation	2	5	3	2				10	C			
4. SUPPLEMENTARY ESSENTIAL HEALTH AND SAFETY REQUIREMENTS TO OFFSET HAZARDS DUE TO LIFTING OPERATIONS																			
4.1 GENERAL																			
4.1.2.1				Lack of stability	Prev. Action	6 Instructions	Misinterpretation	3	5	1	1				7	D			
4.1.2.3				Mechanical strength	Prev. Action	3 Calculations		3	5	2	1				8	C			
4.1.2.4				Pulleys, drums, wheels, ropes and chains	N/A			0	5	1	1				7	D			
4.1.2.5				Lifting accessories and their components	N/A	6.2,3,4 Instructions	Incorrect assembly	0	5	3	2				10	C			
4.1.2.6				Control of movements	Prev. Action			2	5	3	2				10	C			
4.1.2.7				Move. of loads during handling	Prev. Action			2	5	3	2				10	C			
4.1.3				Fitness of purpose	Acceptable			1	5	2	1				9	C			
4.2 REQUIREMENTS FOR MACHINERY WHOSE POWERSOURCE IS OTHER THAN MANUAL EFFORT																			
4.3 INFORMATION AND MARKINGS																			
4.3.1	5.1.4			Chains, ropes and webbing	N/A	6 Instructions	Misinterpretation	0	5	1	1				7	D			
4.3.2	5.1.4			Lifting accessories	Prev. Action	6 Instructions	Misinterpretation	2	5	3	2				10	C			
4.4 INSTRUCTIONS																			
4.4.1				Lifting accessories	Prev. Action	6 Instructions	Misinterpretation	2	5	3	2				10	C			

Dear Customer.

In order to avoid damage to property and/or injury to persons, the given instructions must be observed and the lifting sling with tool basket must be properly and adequately maintained.

The instructions in this manual must be read, understood and observed by all people working with, supervising or in proximity of the lifting sling with tool basket.

All safety recommendations or requirements from users/owners own companies Health and Safety Manuals must be complied with, as all local rules and regulations.

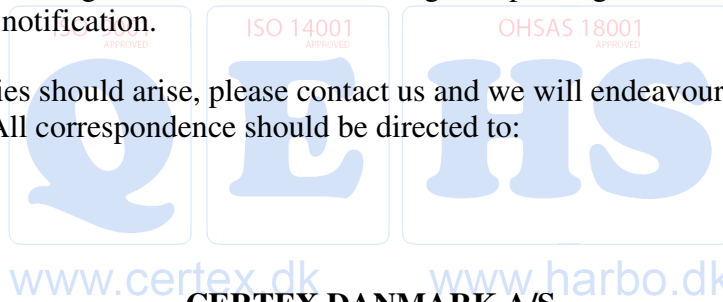
This manual must be kept with the lifting sling with tool basket at all times.

It is important that all manuals for e.g., lifting equipment, mounting brackets, shackles, roundslings, etc. are also read and understood. All instructions in these manuals must be observed, and all lifting accessories must be CE marked and approved for lifting.

Should damage and functional disturbances arise due to the fact that the instructions were not observed, CERTEX DANMARK A/S cannot be held responsible or liable.

The designer reserves the right to make technical changes improving the lifting sling with tool basket, without prior notification.

If difficulties or queries should arise, please contact us and we will endeavour to solve the problem as soon as possible. All correspondence should be directed to:



CERTEX DANMARK A/S
Trekanten 6-8
DK - 6500 Vojens
Denmark
Phone no.: (45) 74 54 14 37

Original Instructions.

 **AXEL JOHNSON INTERNATIONAL**



CERTEX DANMARK A/S
Trekanten 6-8 • DK-6500
Vojens
Tlf.: +45 74 54 14 37
Fax: +45 74 54 05 62
E-mail: salg@certex.dk

CERTEX DANMARK A/S
Jernholmen 43-47 • DK-2650
Hvidovre
Tlf.: +45 36 77 40 30
Fax: +45 36 77 40 48
E-mail: salg@certex.dk

CERTEX DANMARK A/S
Håndværkervej 5 • DK-9000
Aalborg
Tlf.: +45 98 13 18 88
Fax: +45 98 13 18 77
E-mail: salg@certex.dk

CERTEX DANMARK A/S
Strevelinsvej 22 • DK-7000 Fredericia
Tlf.: +45 75 91 40 00
Fax: +45 75 91 40 01
E-mail: salg@certex.dk

PETER HARBO A/S
Olievej 4 • DK-6700 Esbjerg
Tlf.: +45 75 13 08 44
Fax: +45 75 13 07 35
E-mail: salg@harbo.dk

The lifting sling with tool basket may only be used for lifting if and when the following conditions are complied with.

The lifting sling with tool basket, is a webbing sling in basket hitch form, with tool basket securely sewn to the sling. The webbing sling is supplied with steel rings for lifting in a crane hook. Tool basket and webbing sling may not be considered as part of the load, and it is therefore classified as a lifting accessory, and must be CE marked and meet the requirements of Directive 2006/42/EC, with regards to marking.

The lifting sling has been proof tested with 600 Kg free hanging in tool basket, and loaded with a plate through the base and secured in a floor rail to over 4000 Kg

Please notice that any failure to follow these instructions in this manual can cause severe injury to you and/or your colleagues

Service instructions:

- The lifting sling with tool basket has a maximum service life of 5 years from the year of production
- The lifting sling with tool basket must have a fixed label with the producers name and address, Description, Type, WLL and CE marking, and label with date for the next inspection. Please refer to the production date if the label is missing or unreadable. Bags without a label must not be used.



Example of label.

- The lifting sling with tool basket has to undergo a service check at least once a year. The service has to be performed by an approved lifting equipment supplier.
- The lifting sling with tool basket must to be inspected for any visible flaws, damage before each use.

Original Instructions.

AXEL JOHNSON INTERNATIONAL



CERTEX DANMARK A/S
Trekanten 6-8 • DK-6500
Vojens
Tlf.: +45 74 54 14 37
Fax: +45 74 54 05 62
E-mail: salg@certex.dk

CERTEX DANMARK A/S
Jernholmen 43-47 • DK-2650
Hvidovre
Tlf.: +45 36 77 40 30
Fax: +45 36 77 40 48
E-mail: salg@certex.dk

CERTEX DANMARK A/S
Håndværkervej 5 • DK-9000
Aalborg
Tlf.: +45 98 13 18 88
Fax: +45 98 13 18 77
E-mail: salg@certex.dk

CERTEX DANMARK A/S
Strelinsvej 22 • DK-7000 Fredericia
Tlf.: +45 75 91 40 00
Fax: +45 75 91 40 01
E-mail: salg@certex.dk

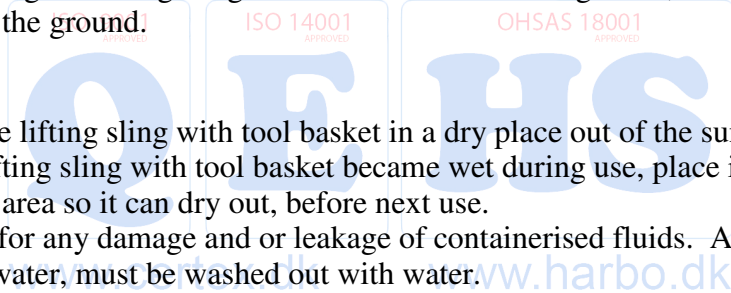
PETER HARBO A/S
Olievej 4 • DK-6700 Esbjerg
Tlf.: +45 75 13 08 44
Fax: +45 75 13 07 35
E-mail: salg@harbo.dk

Directions for use:

- Perform an inspection before use:
 - Check if the lifting sling with tool basket has undergone a service check within the last year.
 - Check for damage, there may not be any holes in the tool basket.
 - Any signs of stress or overloading.
 - Inspect for wear and tear, and take out of service if there are any concerns, about wear or damage to lifting sling and/or tool basket.
 - The material may not be humid (besides from water).
 - In minus temperatures, the webbing sling must be dried before use, as ice in webbing can damage the sling under lifting operation.
 - The material may not be exposed to oil or any other fluids (only water)

- Placing the items/luggage in the bag
 - The maximum pressure per hundred square centimetres is 2.5 kg.
 - No sharp objects. Unless the object is adequately protected, to prevent damage to the lifting sling with tool basket.
 - All fluids must to be in a suitable sealed container.
 - Fluids and tools must never be lifted at the same time in a lifting sling with tool basket.
 - Never drag the lifting sling with tool basket over the ground, it must always be lifted clear of the ground.

- After use
 - Keep the lifting sling with tool basket in a dry place out of the sun.
 - If the lifting sling with tool basket became wet during use, place it in a well ventilated and dry area so it can dry out, before next use.
 - Inspect for any damage and or leakage of containerised fluids. All leaked fluids, except water, must be washed out with water.



Original Instructions.

 AXEL JOHNSON INTERNATIONAL



CERTEX DANMARK A/S
Trekanten 6-8 • DK-6500
Vojens
Tlf.: +45 74 54 14 37
Fax: +45 74 54 05 62
E-mail: salg@certex.dk

CERTEX DANMARK A/S
Jernholmen 43-47 • DK-2650
Hvidovre
Tlf.: +45 36 77 40 30
Fax: +45 36 77 40 48
E-mail: salg@certex.dk

CERTEX DANMARK A/S
Håndværkervej 5 • DK-9000
Aalborg
Tlf.: +45 98 13 18 88
Fax: +45 98 13 18 77
E-mail: salg@certex.dk

CERTEX DANMARK A/S
Strevelinsvej 22 • DK-7000 Fredericia
Tlf.: +45 75 91 40 00
Fax: +45 75 91 40 01
E-mail: salg@certex.dk

PETER HARBO A/S
Olievej 4 • DK-6700 Esbjerg
Tlf.: +45 75 13 08 44
Fax: +45 75 13 07 35
E-mail: salg@harbo.dk

After the items have been inserted into the basket, hold the lifting sling with tool basket in an upright position and fold as shown on the pictures below.



Hold basket in an upright position, under filling

first close with the inside velcro



Fold over top edge to ensure basket is correctly closed.



Lifting rings must be lifted up over the basket, so the hook can be assembled.

Original Instructions.

 AXEL JOHNSON INTERNATIONAL



CERTEX DANMARK A/S
Trekanten 6-8 • DK-6500
Vojens
Tlf.: +45 74 54 14 37
Fax: +45 74 54 05 62
E-mail: salg@certex.dk

CERTEX DANMARK A/S
Jernholmen 43-47 • DK-2650
Hvidovre
Tlf.: +45 36 77 40 30
Fax: +45 36 77 40 48
E-mail: salg@certex.dk

CERTEX DANMARK A/S
Håndværkervej 5 • DK-9000
Aalborg
Tlf.: +45 98 13 18 88
Fax: +45 98 13 18 77
E-mail: salg@certex.dk

CERTEX DANMARK A/S
Strelinsvej 22 • DK-7000 Fredericia
Tlf.: +45 75 91 40 00
Fax: +45 75 91 40 01
E-mail: salg@certex.dk

PETER HARBO A/S
Olievej 4 • DK-6700 Esbjerg
Tlf.: +45 75 13 08 44
Fax: +45 75 13 07 35
E-mail: salg@harbo.dk

Lifting sling with tool basket may only be lifted in the steel rings.



It is not permitted to use cabin hooks or other open links between the steel rings and hook, and hook must have safety latch.

NOTE: the handles are only for handling and must never be used to lift in.



www.certex.dk

www.harbo.dk

General Safety Notes:

- When manoeuvring the lifting sling with tool basket under lift, the operators may only use the handling straps on the side of the tool basket.
- Before releasing the lifting hook, please ensure the bag is on a secure base, so the bag cannot fall or tip, and release the contents.
- Never walk or pass under a lifted load/ lifting sling with tool basket.
- Never attempt to modify the lifting sling with tool basket.
- Never exceed the WLL of the lifting sling.
- Never expose the lifting sling with tool basket to naked flames, temperatures over 100°C or under -30°C.

Original Instructions.

 AXEL JOHNSON INTERNATIONAL



CERTEX DANMARK A/S
Trekanten 6-8 • DK-6500
Vojens
Tlf.: +45 74 54 14 37
Fax: +45 74 54 05 62
E-mail: salg@certex.dk

CERTEX DANMARK A/S
Jernholmen 43-47 • DK-2650
Hvidovre
Tlf.: +45 36 77 40 30
Fax: +45 36 77 40 48
E-mail: salg@certex.dk

CERTEX DANMARK A/S
Håndværkervej 5 • DK-9000
Aalborg
Tlf.: +45 98 13 18 88
Fax: +45 98 13 18 77
E-mail: salg@certex.dk

CERTEX DANMARK A/S
Strevelinsvej 22 • DK-7000 Fredericia
Tlf.: +45 75 91 40 00
Fax: +45 75 91 40 01
E-mail: salg@certex.dk

PETER HARBO A/S
Olievej 4 • DK-6700 Esbjerg
Tlf.: +45 75 13 08 44
Fax: +45 75 13 07 35
E-mail: salg@harbo.dk